



in this issue...

A wealth of triviality on which our inflated budget has been invested, plus -

Driving in the fast lane: Appendix 1
why it should never happen

Stool analysis workshop: Appendix 2
safety in motion

Perambulation festival: Appendix 3
the benefits of all-fours

Innovation could bring sustainability benefits

A review of the industry's electricity consumption has discovered that 63% of the south-east's commuter network could be powered by burning the flammable gases discharged by Bob Crow. Researchers from Lyneja Pockits (Investments) PLC told delegates at a Rail Sustainability Masterclass that wind turbines should be installed in rooms used by ATOC spokesmen and Virgin Trains' snacks recycled as sub-base for the permanent way.

Supplementary power could be provided by converting the Newport-Gloucester line into a sluice for the Severn Bore and fitting water wheels in on-board urinals. These measures would allow the traction current to be turned off during Lent.

Meanwhile, an RAIB (Read About It Belatedly) inquiry has concluded that the voltage carried in conductor rails around Torville Dean should be reduced to 3V DC after an Edible Dormouse had its whiskers singed whilst drinking from a puddle. The creature, named Brutus, had passed through the access gate with a colony of

Pygmy Shrews to undertake an audit of trackside sweet wrappers for a key DBHS research project.

Investigators found that the animals did not fully understand the term '*impending doom*' despite the recent definition published by DBHS. As a result, their safe system had not taken into account the possibility of a plasma discharge from the adjacent third rail as they took a personal needs break. This failing was compounded by them having eaten the site warden and shredded their Rimini Pack to infill a defective bridge abutment. ■

Sneeze prompts research programme

A team of biohazard specialists had to be called in after an unauthorised sneeze sent shockwaves around the 15th floor of the Treacle Tower. An area to the rear of the Adornment Germination Podules was evacuated and has since been disinfected by wishful thinking.

Eight members of a Statistical Massage Performance Troup, who were rehearsing in an adjacent steam room, lost track of their running total of RIDDOR accidents and had to recalculate the weighted average deviation using chocolate fingers.

The cause of the incident was found to be a bead of ganger's sweat which had entered the building whilst its hermetic seal was on a fishing trip to the Butt of Lewis. This prompted a Concept Entanglement Weaver, whose immune system had already been compromised by a gap in his office curtains, to suffer an allergic reaction.

A £685,000 research project has been established to determine the optimum density of all window dressings, including the Railway Strategic Safety Plan. ■

PHOTO: MICHAEL HANSELMANN



An Edible Dormouse changes a DC insulator pot.

Big news at the downsizing extravaganza

One of DBHS's 00-Gauge Risk Modellers was trampled under foot during a recent departmental pontification at Hopton Wafers. An encapsulated audience was being taught the difference between HLOS safety metrics and emperors' new clothes when they collectively lost consciousness, causing a nearby blockade of Decision Control Combatants to panic.

The event featured an exhibition of exquisitely fashioned models, all produced from satellite imagery and intimate examination of custard creams. Amongst those on display were celebrated replicas of a slightly greasy ballast piece, the torn corner from a Line Blockage Form and a nugget of excellence found near Cheam.

It was announced that 143 Movement Mitigation Figurines will be crafted over the next three months to deal with the expected rise in passenger traffic on DBHS's model railway, caused by the implementation of Network Rail's latest Rimini Standard. This requires all infrastructure work to be carried out at arm's length and overseen by the blind leading the blind.

The new requirements and associated Rule Book changes were the subject of deep and rigorous consultation with relevant parties including the East Penge Cheese Institute, the Association of Sinister Undertones, Julian Clary's Mincing & Inuendo Ring and the Community Soup Partnership. ■



PHOTO: LEE CARSON

DBHS had to convene a Rapid Response Council after a virtual ham sandwich smashed through a bridge parapet and smeared French mustard across the line.

For more information, please contact the **Earl of Brackish-Waters, Chief Overlord of Minutiae (Invisibility Division)** on **0898 922 6620** or email **earl.brackish-waters@slumberland.uk.org**

Welders receive sustainable shields

Having instituted trials of biodegradable fishplates and solar-powered tunnel lighting, DBHS's Sustainable Options Development Unit (SOD-U) has started to test an innovative welding heat shield. The

EcoKnob™ 5000 chocolate fireguard is manufactured from renewable materials and can resist the heat from a Swan Vesta at 18 paces. ■



PHOTO: ALFRED PALMER

Missing 'hint' restored

The lost master copy of Hint 3/DF8912/T1T (*Pencil sharpening whilst under duress*) has been found behind a vol-au-vent in a disused Dynamism Chamber on the 24th floor. It is currently being re-etched by a lithographer from Wyre Piddle.

DBHS's Conduct Review & Assessment Panel (CRAP) has initiated disciplinary action against Nourishment Chargehand Murtle Slag who transferred the vol-au-vent to a Spent Fare Repository without first commissioning a risk ranking study. A Fretful Resolution Sloth is reported to have suffered a fit of peak as he passed by. ■

'Kickabouts' to offer enlightenment

Following DBHS's acclaimed definition of the term '*approaching train*', the organisation is to run an industry-wide series of Dark Cloud Kickabouts in an effort to promote a better understanding of other confusing word combinations. These will include -

- '*receding hairline*' - the linear demarcation of a worksite beyond which rabbits etc will habitually encroach even when briefed not to do so
- '*vacant possession*' - a blockage of the line within which nothing is happening
- '*on-track plant*' - leaves or other flora delaying our journey back to Surbiton
- '*travelling salesman*' - a mobile operative appointed to assist a failed locomotive on a windy day
- '*team building*' - a secure fabrication in which groups of talented and industrious people are restrained to prevent them doing harm (*also see 'Wormwood Scrubs'*). ■

For more information, please contact **Carrie Oakey, Dictionary Corner Door Stop** on **0898 666 5294** or email **carrie.oakey@slumberland.uk.org**

DBHS Staff Spotlight: Orphelia Hardaker

In 2009, Viscount Stauch of Torrens (successor to Lord Steadfast of Evergreen as Protector of the Rules) treacherously accepted a Temporary Non Compliance application that allowed Swing Nose Crossings to be secured with paper clips and scotch tape. His actions were prompted by the unchaste behaviour of his maid who, at the time, was sponsored by W H Smith.

Ever since, new Standards Committee members have had to demonstrate their resistance to such temptation by passing a rigorous examination from DBHS's incumbent Status Quo Provocateur.

The post is currently held by Orphelia Hardaker, usually between her thighs. Her appointment at DBHS followed a successful period as senior policy advisor to 12 Conservative ministers. ■

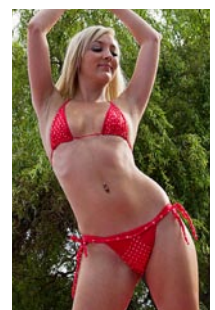


PHOTO: WONDERFERRET

For more information, please contact **Chorlton-cum-Hardy Institute of Correction** on **0161 099 0666** or email **orphelia.hardaker@discipline.com**